

Alaska Department of Fish and Game

Habitat Section
Southeast Region



112-13-10060-2015 Tributary 2

ADDITION

Water body name:

Survey date: 8/25/2022

Quad: Sitka D-4

Species & Lifestage:

Upper Reach Latitude: 57.989654 **Longitude:** -135.051046

Survey crew: RR, FC

Lower Reach Latitude: 57.989818 **Longitude:** -135.051218

Findings: We surveyed this uncataloged stream using a backpack electrofisher and GPS. We captured juvenile coho salmon and Dolly Varden. The tributary stream has a short reach of subterranean flow and flows through some woody debris jams prior to connecting to the main channel (Table 1; Figures 1, 2).

Recommendations: Add this uncataloged stream to the anadromous waters catalog for rearing coho salmon (Figure 3).

Nomination: Pending

Table 1.—112-13-10060-2015 tributary 2 survey data.

Waypoint	Latitude	Longitude	Notes	Stream Width ft	Stream Substrate	Habitat Features	Gradient %	Sample Effort	Sample Results
1569	57.989805	-135.051220	Tributary off of main on river-left. Following tributary upstream to the road crossing.	6-8	Small Gravel Large Gravel	Spawning Substrate	2-4	EF	2 CO
1570	57.989546	-135.051003	Tributary goes subsurface for ~15-20' upstream.	2-4	Small Gravel Fine Organic		4-6		
1571	57.989290	-135.050837	Resident fish capture only upstream of subsurface flow.					EF	4 DV
1572	57.989658	-135.051066	Upper extent of anadromy on river-left tributary, stream begins to have small woody debris jams and a gradient increase upstream of this point.	4-6	Small Gravel Fine Organic		2-4	EF	2 CO 4 DV



Figure 1.—Juvenile coho salmon captured at waypoint 1572.



Figure 2.—Tributary 2 at waypoint 1570.

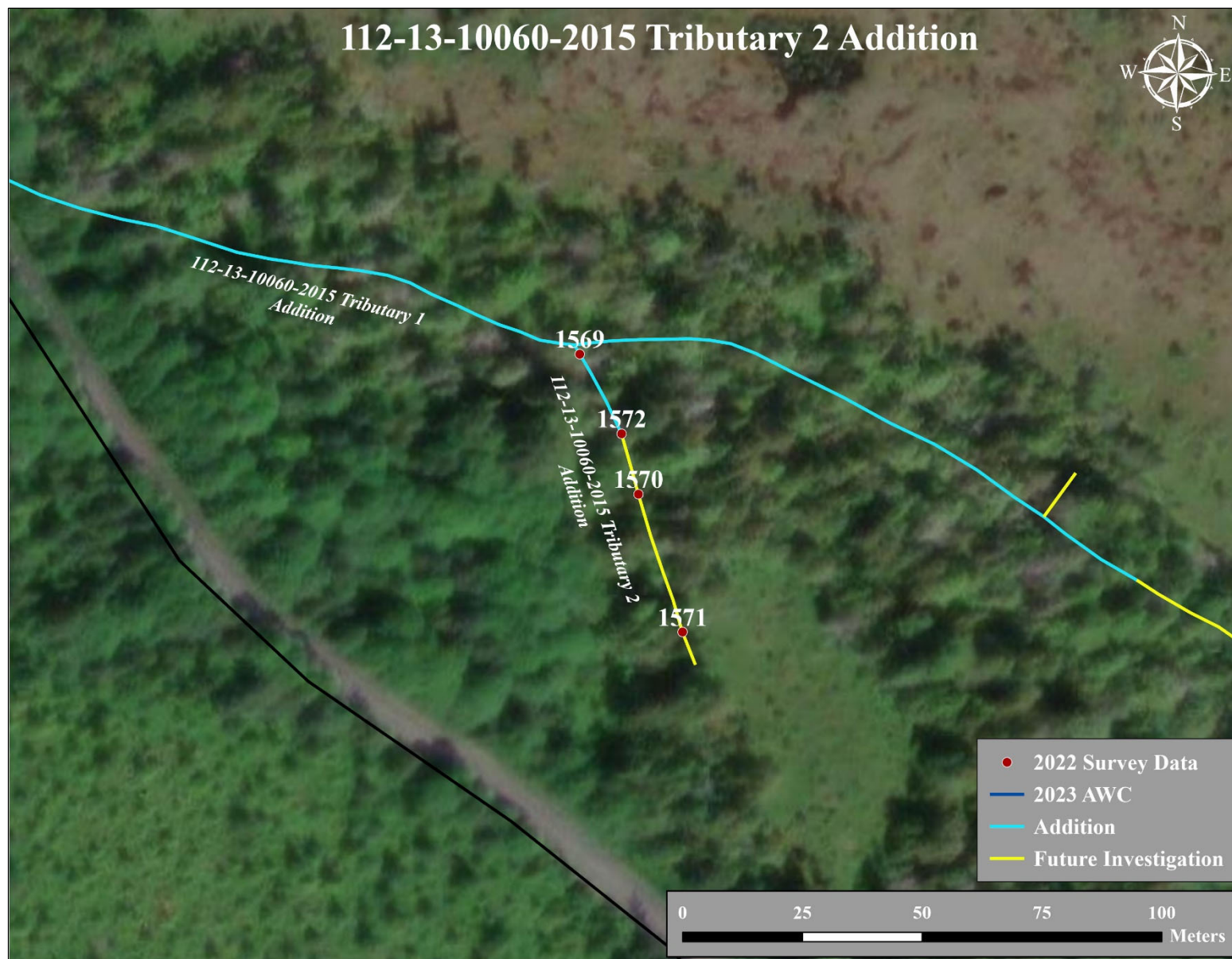


Figure 3.–112-13-10060-2015 tributary 2 addition map.